


EUROPE'S MOST **INNOVATIVE**
REAL ESTATE BRAND



REALTOR
OF EXCELLENCE

Swiss Family Office 

Alisbachweg 24, 6315 Oberägeri

PROPERTY PORTFOLIO

Toni Enderli
LIVE LIFE NOW

www.tonienderli.com
www.realtorofexcellence.co.za

Elegant Single-Family Home in a Prime Elevated Location

CHF 5,790,000

\$ 7,089,506.56 | £ 5,269,160.55 | € 6,163,443.42



Property Size: 240 m²

This spacious 6.5-room single-family home with an additional 3.5-room apartment offers a wide range of uses – whether as a home office, nanny flat, multi-generational living, or for rental income. A connecting door between the two units allows for easy conversion into a single residence with a total of approximately 240 m² of net living space. Numerous utility rooms and two double garages provide ample space for hobbies, sports equipment, or a stylish wine cellar.

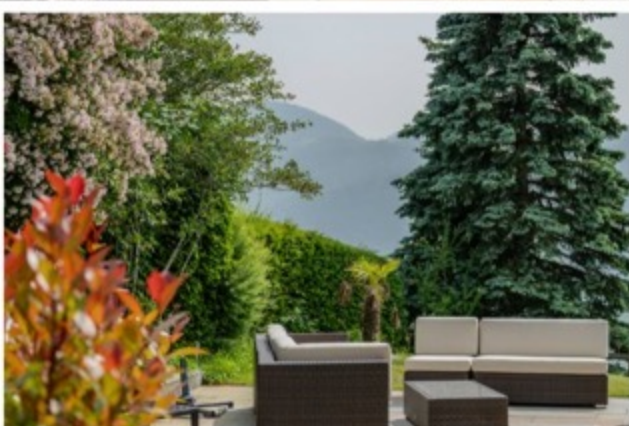
The heart of the home is the expansive living area with double-height ceilings, creating an impressive and airy atmosphere. A fireplace adds warmth and coziness in winter. From here, you can enjoy a breathtaking panoramic view over the entire Ägerital and the lake. A winter garden extends the bright living space and creates a harmonious transition between indoors and outdoors.

The generous garden surrounds the house and ensures maximum privacy. The property covers 1,099 m² and is situated above the road, offering unobstructed views. With a reserve on the building density (AZ), there is also potential for an extension of the building.

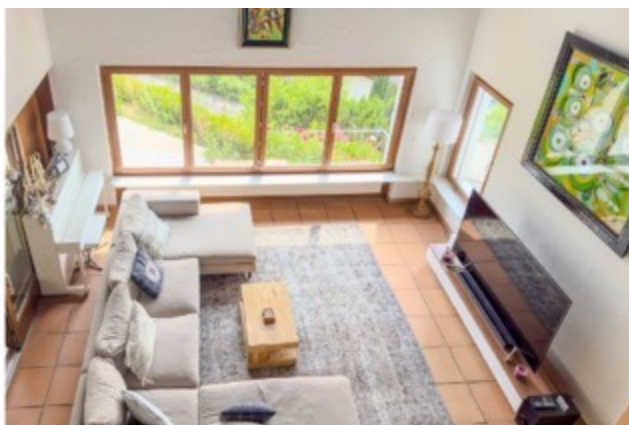
SPECIAL FEATURES

- 6.5-room main house with separate 3.5-room apartment
- Elevated position with unobstructed views and high privacy
- Open living space with double-height ceilings, winter garden, and fireplace
- Spacious utility rooms, 2 double garages, and 4 outdoor parking spaces
- Large 1,099 m² plot with unused building density











Contact us to arrange a viewing of this magnificent property.



Steph Komminoth

+41 77 423 8388
steph@roeswiss.ch

tonienderli.com

